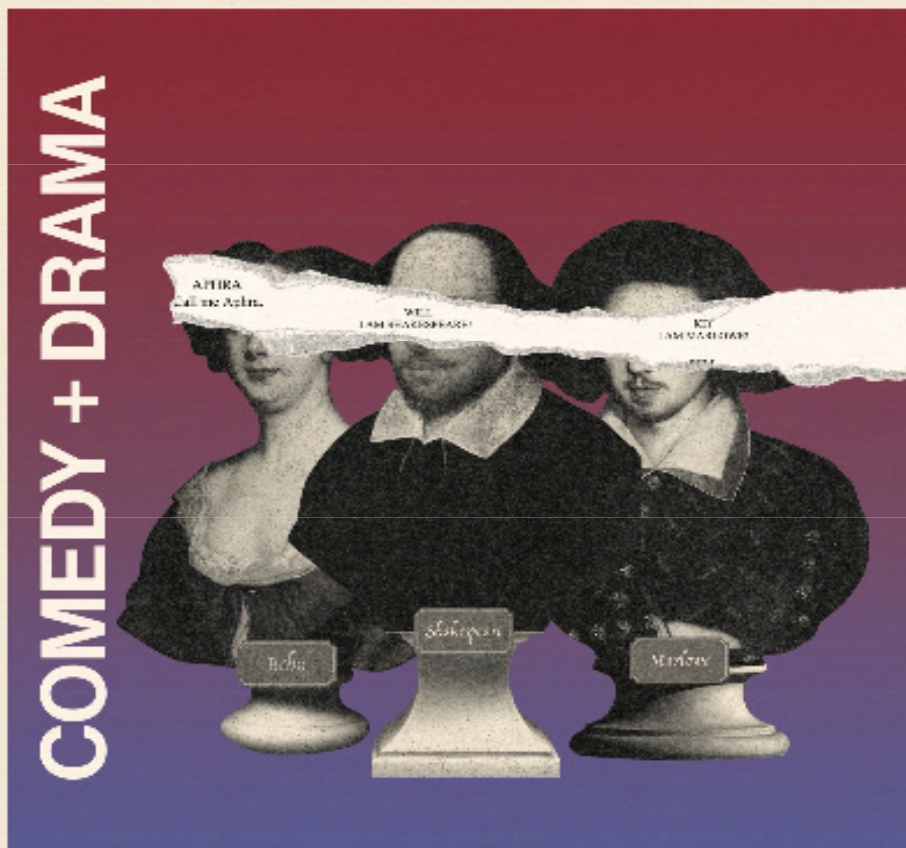


SANCTA FE PLAYHOUSE

YOUR LOCAL THEATER SINCE 1922



Or, & Born With Teeth

WRITTEN BY **LIZ DUFFY ADAMS**

DIRECTED BY **ZOE BURKE** (*Or,*)

& **ANTONIO MINIÑO** (*Born With Teeth*)

SEASON SPONSORED BY **ERIN & THOMAS BUNKLEY III,**
BRUCE STUART, AND THE **ESTHER CARP SCHOOL OF LIVING FUND**



Graphic Sky
Printing

YOUR **GO-TO**
PRINT SHOP

*A proud supporter of
Santa Fe Playhouse.*

Graphic Sky Printing is your go-to shop for art reproductions, signage and banners, and all your business printing needs including business cards, booklets, brochures and envelopes.

Our fine art department can reproduce original art with incredible color accuracy on stretched canvas or archival papers. And if you want your art printed on greeting cards or postcards we can do that too!

Come in and see our shop at 3218 Calle Marie, around the corner from Meow Wolf or visit graphicsky.com to see our services and competitive pricing, place an order online, or request a custom quote.

We offer graphic design and scanning services.

250
business
cards
for \$25!



505 473 1120



info@graphicsky.com



graphicsky.com



3218 Calle Marie, Santa Fe





SANTA FE REPORTER

We are a PROUD sponsor
of the Santa Fe Playhouse.

The *Santa Fe Reporter* is the city's source for award-winning
alternative news and culture since 1974.

sfreporter.com

On Programming a Rep

The programming of *Or*, and *Born With Teeth* was a series of happy accidents highlighting the collaborative process of having more than one voice program a season. After *Born With Teeth* premiered in Houston in 2022, it spread like wildfire nationwide. We had both seen some of Liz Duffy Adams' work in NYC and were immediately interested. Antonio reached out via Facebook to Liz to see if they could get a copy of the play.

After reading it, Antonio was immediately drawn to its wit, passion, and the confirmed scenario (thanks to AI) of Marlowe and Shakespeare collaborating on the Henry VI trilogy together. In a time of such antagonism towards the LGBTQ+ community, it is essential to highlight that queer people have always been here. Scholars have long discussed the clues to the sexuality of both Marlowe and Shakespeare. It is exciting to have such a fact-based play that is also relevant to the contemporary experience (If you have any doubt, one should read Marlowe's *Edward II*, or the first half of Shakespeare's sonnets, which are love poems to a young man).

And so *Born With Teeth* was to start our season, and we applied for the rights. We waited longer than usual but did eventually receive them. Then, shortly before our season announcement, we were notified that we might lose the rights due to the play getting a significant production. So, we started looking for another piece. David read *Or*, and suggested it to the team. It was also written by Liz and focused on female playwright Aphra Behn. It had parallel themes of quill, queerness, espionage and echoes of the present with Liz's Neo-Restoration and Neo-Victorian writing style. The team had a closed reading of the piece, and the writing soared. That same day, we learned we could keep the rights to *Born With Teeth*. This is when Executive Director (and Interim Artistic Director at the time) Colin Hovde said, "Let's do both in rep." Decisions and risks were taken, and we are so happy we did.

Multiple thoughts, voices, and accidents brought about what we feel is timely and necessary programming. We hope you enjoy these two productions. They have been created with great care by everyone involved. May they inspire you to dive back in or discover the writings of Aphra, Kit, and Will.

This is just the beginning of our season of creation.
Thank you for being with us today.

Antonio Miniño & David Stallings
Artistic Directors



2024 SEASON

MARCH 6-31, 2024

OR, & BORN WITH TEETH

Written by Liz Duffy Adams

Directed by Zoe Burke & Antonio Miniño

MAY 9-JUNE 2, 2024

WHAT THE CONSTITUTION MEANS TO ME

Written by Heidi Schreck

Directed by Lynn Goodwin

JUNE 27-JULY 28, 2024

SUNDAY IN THE PARK WITH GEORGE

Book by James Lapine; Music and Lyrics by Stephen Sondheim

Directed by Anna M. Hogan

August 15-18, 2024

PUEBLO REVOLT (Workshop)

Written by Dillon Christopher Chitto

Directed by Tara Moses

August 29-September 15, 2024

MELODRAMA

Written by Four Playwrights with ties to New Mexico

October 17-November 10, 2024

CEBOLLAS

Written by Leonard Madrid

Directed by Rebecca Aparicio

December 2-29, 2024

YOU'RE A GOOD MAN, CHARLIE BROWN (Revised)

Based on the comic strip Peanuts by Charles M. Schulz

Book, music, and lyrics by Clark Gesner

Additional dialogue by Michael Mayer

Additional music and lyrics by Andrew Lipka

Directed by Christine McHugh



DIVERSITY, EQUITY, AND INCLUSION

At the Santa Fe Playhouse, a diverse, inclusive, and equitable workplace is one where all employees and volunteers, whatever their gender, race, ethnicity, national origin, age, sexual orientation or gender identity, education or disability, are valued and respected.

We are committed to a nondiscriminatory approach and provide equal opportunity for employment and advancement in all of our departments, programs, and productions. We respect and value diverse life experiences and ensure that all voices are valued and heard.

We're committed to modeling diversity and inclusion for the nonprofit sector of the theater industry, and to maintaining an inclusive environment with equitable treatment for all.

**FOR FURTHER RESOURCES AND TO LEARN MORE
ABOUT OUR POLICIES AND EFFORTS,
VISIT santafeplayhouse.org/diversity-equity-inclusion/**

LAND ACKNOWLEDGEMENT

Santa Fe Playhouse acknowledges the breath of those that came before us. The place we call Santa Fe is recognized and known as Oga Po'geh, meaning White Shell Water Place. This is the land of the Northern and Southern Tewa (often identified as Tanos). We recognize that this land is one piece of a larger, boundless terrain for Indigenous peoples: the Nambé Pueblo; the Tewa; and the Jicarilla Apache, the Diné (Navajo), Cochiti, Taos, and Hopi Pueblos.

This acknowledgment does not take the place of authentic relationships with Indigenous communities; it serves as a first step in honoring the land and the people.

Santa Fe Playhouse presents,

OR,

Written by Liz Duffy Adams

Directed by Zoe Burke

BORN WITH TEETH

Written by Liz Duffy Adams

Directed by Antonio Miniño

March 6 - 31, 2024

CAST of *Or,*

| | |
|--|------------------------|
| Aphra Behn..... | Breshaun-Birene Joyner |
| Charles II, William Scot, Jailer..... | Patrick Janssen |
| Nell Gwynne, Maria, Lady Davenant..... | Chloe Carson |

CAST of *Born With Teeth*

| | |
|-----------------------|------------------|
| Will Shakespeare..... | David Stallings* |
| Kit Marlowe..... | Marc Sinoway* |

CREATIVE TEAM

| | |
|--|---|
| Writer..... | Liz Duffy Adams |
| Director <i>Or,</i> | Zoe Burke |
| Director <i>Born With Teeth</i> | Antonio Miniño |
| Scenic Designer..... | James W. Johnson |
| Costume Designer..... | Lisa Reneé Jordan+ |
| Lighting Designer..... | Kolby Clarke |
| Sound Designer..... | Jorge Olivo |
| Props Designer..... | Emily Rankin |
| Intimacy Director & Dialect Coach..... | Adi Cabral |
| Fight Director (<i>Born With Teeth</i>)..... | Sydney Schwindt |
| Stage Manager (<i>Or,</i>)..... | Allison Goetzman |
| Stage Manager (<i>Born With Teeth</i>)..... | Harirai Khalsa |
| Run Crew / Dresser..... | Sam Connan |
| Scene Shop..... | Timbernaut Woodwork + Design |
| Stage Floor Scenic Painter..... | Cedra Wood |
| Electrician..... | Anton Schuster |
| Special Thanks..... | Noah Segard, Make Santa Fe, Santa Fe Opera, Chocolate Maven |



United Scenic Artists, Local USA 829 of the IATSE
is the union representing
scenic, costume, lighting, sound and projection designers in Live Performance



SEASON SPONSORED BY ERIN & THOMAS BUNKLEY III, BRUCE STUART,
AND THE ESTHER CARP SCHOOL OF LIVING FUND

INTRODUCING...

TIMBERNAUT

WOODWORK + DESIGN

Build it better. Make it matter.

Timbernaut specializes in the creation of custom furniture, architectural elements and complete spaces. Whether it be a long time dream or a new inspiration, now is the perfect time to add beauty and character to your home or business! Tasha and Nate facilitate a visionary design/build process that connects clients with their innate joy and creativity, while delivering truly bespoke results.



Elevate your space with Timbernaut—where dreams become reality.



www.timbernaut.com



[timbernaut_studios](https://www.instagram.com/timbernaut_studios)

Or,

PLACE

London

TIME

The play is set in the Restoration period, but plays off the echoes between the late 1660s, the late 1960s, and the present.

Born With Teeth

PLACE

London

TIME

Winter 1591, Summer 1592, May 1593.
Echoes of the present.

WHO'S WHO - CAST of *OR,*

BRESHAUN-BIRENE JOYNER (she/her) (*Aphra Behn*) as a performer and educator based in Santa Fe. As a performer, her most recent work has been with Incite Shakespeare Company. A few of her roles with ISC have been Lady Percy in *Henry the Fourth Part I*, Casca in *Julius Caesar*, and Antigona in *A Winter's Tale*. Additional roles from other companies include the Marquise de Merteuil in *Les Liaisons Dangereuses* (John Waldron Arts, Bloomington IN); Bernada Alba in *The House of Bernada Alba* (John Waldron Arts, Bloomington IN); and Anne Bonney in Ken Ludwig's *Treasure Island* (Cardinal Stage Company, Bloomington IN). As an educator, Breshaun has taught for over twenty years in traditional and non-traditional learning environments from Shakespeare performance summer camps to teacher education college classrooms. She was also the Education Director for several years at the Bloomington Playwrights Project, a non-profit performing arts theater dedicated to the production and development of new plays in Bloomington, Indiana.

PATRICK JANSSEN (he/him) (*Charles II, William Scot, Jailer*) by day, Patrick assumes the role of Senior Sound Designer for Netflix, but he finds genuine joy in moonlighting as an actor with the esteemed Santa Fe Playhouse, where he recently performed in the 2023 production of *The Baby Monitor*. After receiving an MFA in Theater from the California Institute of the Arts, Patrick's creative journey has primarily revolved around designing and mixing sound, spanning TV cartoons, films, theme parks, theater, and even a stint with Cirque du Soleil. Originally hailing from the heartland in Kansas, Patrick recently traded the glitz (and grime) of Los Angeles for the enchanting vibes of Santa Fe, and hasn't looked back since. When he's not performing intimately for local audiences, or crafting soundscapes for global ones, Patrick takes on his most cherished roles: that of a devoted father and husband to a wonderful family.

CHLOE CARSON (she/her) (*Nell Gwynne, Maria, Lady Davenant*) is an actor, director, and improviser born and raised in Austin, Texas, and currently living in the mountains outside of Santa Fe. Notable previous theater credits include *On Clover Road* (Santa Fe Playhouse), *Waiting for Godot* (Theater Workshop) and *Red Noses*, which she performed at the Edinburgh Fringe Festival. She created and continues to produce and direct *Anonymo/us Project*, a theater and mental health program for high schools that uses students' real and anonymous words to create a show for the school community. In addition to seeing her hamming it up in *Or*, you can find her performing with The Audience improv team at Santa Fe Improv. She's thrilled to be working with the wonderful people at the Santa Fe Playhouse for a second time.

WHO'S WHO - CAST of *BORN WITH TEETH*

DAVID STALLINGS (he/they) (*Will Shakespeare*) is an actor and playwright whose work has been seen internationally. At Santa Fe Playhouse, you may have seen David in *The Night Before Christmas* (Simon), *A Gentleman's Guide to Love and Murder* (D'Ysquith Family), *The Baby Monitor* (Damon), and *Everybody* (Somebody/Everybody). Other favorite roles include Tobias (*Sweeney Todd*), Lord Goring (*An Ideal Husband*), Kendal (*Sweet, Sweet Spirit*), Demetrius (*A Midsummer Night's Dream*), Lady Macbeth (*Macbeth*), Derek (*Ripcord*), Mordred (*Camelot*), Lord Henry (*The Picture of Dorian Grey*), Fenton (*Merry Wives of Windsor*), Tuzenbach (*The Three Sisters*), and Jimmy in *The Beggar's Opera* with Santa Fe Opera. David's play *The Baby Monitor* has been seen in Santa Fe, New York, Dublin, Belgrade, and Italy. He serves as one of three artistic directors for SFP, heading Engagement, Education & Operations. Member of AEA.

MARC SINOWAY (he/him) (*Kit Marlowe*) enjoys playing gay historical figures. Marc played Sergei Diaghilev in *MANIFESTO: The Diaghilev Project* (Robert Moss Theater 2018) and Alan Turing in *The Heresy Machine* (Edinburgh Fringe, 2019). This Spring you can see Marc in selections from *MANIFESTO: The Diaghilev Project* at The Bohemians: New York Musicians' Club. On the web, you can find Marc as Tommy in *Hunting Season*. He goes by @marcsinoway on X (formerly known as Twitter) & Instagram. Member of AEA.

WHO'S WHO - CREATIVE

LIZ DUFFY ADAMS (she/her) (Writer) her play *Born With Teeth*, recipient of a 2021 Edgerton Foundation New Play Award and Best Play/Production, 2022 Houston Press Awards, had its world premiere at the Alley Theater in 2022, a production that moved to the Guthrie Theatre in March–April 2023. Her play *Or*, premiered Off-Broadway at WP Theater and has been produced more than 80 times since, including at the Magic Theater, Seattle Rep, and Roundhouse Theatre. She's a New Dramatists alumna and has received a Women of Achievement Award, Lillian Hellman Award, New York Foundation for the Arts Fellowship, Weston Playhouse Music-Theater Award, Massachusetts Cultural Council Fellowship, and the Will Glickman Award for Best New Play (*Dog Act*). Her Artistic Stamp virtual play in letters, *Wild Thyme*, was nominated for a 2021 Drama League Award for Outstanding Interactive or Socially-Distanced Theater. Publications include *Or*, in Smith & Kraus' "Best Plays Of 2010;" *Dog Act* in "Geek Theater," Underwords Press 2014; *Poodle With Guitar And Dark Glasses* in Applause's "Best American Short Plays 2000-2001," and acting editions by TRW Plays, Playscripts, Inc. and Dramatists Play Service. Adams has an MFA from Yale School of Drama and a BFA from New York University's Experimental Theater Wing.

ZOE BURKE (she/her) (Director - *Or*,) is a Santa Fe based director and intimacy professional. In addition to dozens of educational productions in her decade as a licensed K-12 theatre educator, Burke has directed regional productions of *COCK*, *She Kills Monsters*, *A Midsummer Night's Dream*, *Antony and Cleopatra*, and *A Doll's House*. Recent Santa Fe Playhouse credits include directing a reading of *Sweet, Sweet Spirit* by Carol Carpenter and intimacy design for *On Clover Road* and *The Baby Monitor*. She serves as the Company & Operations Manager for SFP.

ANTONIO MINIÑO (they/them) (Director - *Born With Teeth*) is a native of the Dominican Republic and a Santa Fe resident. Select directing credits: *On Clover Road* (SFP), *The Baby Monitor* (New York City, Dublin, Belgrade, Italy [Rome and Cagliari]), *Abbi Gezunt: It Gest Bitter*, *Hooters* (with Bway's Donna Vivino), *Bodega Cat*, *Coffee at Compton's*, *Anais Nin Goes to Hell*, *The Family Shakespeare*, *Scene/Unseen* (Outstanding Director Nominee, PCTF), *The Shadow Project*, and *Moon Child*. Other international directing credits include *The Zoo Story*, *The Importance of Being Earnest*, and *Joan*. Assistant director credits include *A Gentleman's Guide to Love and Murder* (SFP), *Jesus Hopped the 'A' Train* (Signature), and *Miss Rearдон Drinks A Little* (Retro), *Emigrantes* (Teatro Estudio). They served as dramaturg for *Kiss of the Spider Woman* (Evan Tsitsias, Eclipse Theater Company at Toronto's Don Jail; 6 DORA Awards). Antonio currently serves as one of three artistic directors for SFP, heading Literary, Casting, Marketing & PR. Member AEA, SAG-AFTRA, SDC (Assoc).

JAMES W. JOHNSON (he/him) (Scenic Designer) has designed sets and projections for companies across the United States. Having worked as a designer for over a decade, he has had the opportunity to design at Flat Rock Playhouse (*Cats*, *Cat on a Hot Tin Roof*, *Buddy: The Buddy Holly Story*, *Nunsense*, *The 39 Steps*, *RENT*, and *The Producers*), NC Stage Company (*Angels in America*, *Hedwig and the Angry Inch*, *This, One Flea Spare*, and *Complete Wrks... (Abridged)*), and many other professional companies. His most recent shows at Santa Fe Playhouse are *Sweat*, and *The Baby Monitor*. He is incredibly thankful to The Playhouse and his collaborators for their creative spirit and artistic tenacity.

LISA RENÉE JORDAN (she/her) (Costume Designer) selected design credits include: *Fetes de la Nuit* (Ohio Theatre);* Drama Desk Nomination – Outstanding Theatrical Experience; *Shesh Yak* (Rattlestick); *Ominous Men*, *Speak Out*, *Temple of the Souls*, *Comida de Puta* (MultiStages); World Premiere of Jose Rivera's *Lovesong*, *Imperfect* (Theater at 14th St Y); *The Plantation* (Brave New World - Governor's Island); *Romeo & Juliet* (Bryant Park Shakespeare); *Beloved* (Scandinavian American Theatre Company); *Heloise* (Lion Theatre), *The Great Pie Robbery* (Electra Theatre); *Twelfth Night*, *Midsummer Night's Dream*, *Love's Labours Lost* (Shakespeare in the Parking Lot); *Boy in the Bathroom*, *Castronauts* (NYMF); *Witching Hour*, and *Triangle* (Williamstown Theatre Festival); *Holy Land* (HERE Arts); *The Myth Project* (Noor Theatre); *Useless* (IRT); *Ms.Oriental* (Barnard); *Neglect*, and *Thicker than Water* (EST); *Lysistrata* (Edinburgh Fringe); Film/TV Credits include: Assistant Costume Designer for *Greatest Beer Run Ever* (Film), *Plot Against America* (HBO Series). Member of United Scenic Artists Local 829.

KOLBY CLARKE (he/him) (Lighting Designer) is a lighting designer and programmer originally from Coeur d'Alene, Idaho. He holds a BA in Theatre Education from Brigham Young University – Idaho and an MFA in Stage Design from Southern Methodist University. He is currently an assistant professor of theatre at Southern Utah University He enjoys exploring new musical instruments, experimenting with technology, and snow skiing. He enjoys collaborating on projects with friends new and old as well as spending time with his young family.

JORGE OLIVO (he/him/they/them) (Sound Designer) is a sound designer, composer, and engineer based in Brooklyn. Design credits include The Public Mobile Unit Summer of Joy 2021; Associate Sound Design: *Sea Wall/A Life* at the Public; Associate Sound Design: *The Chinese Lady*, Ma Yi at Theater Row; Sound Design: *Anna In The Tropics* audio drama at The Acting Company. Some mixing credits include; A1: *Mojada* at the Public, A1 for *Teenage Dick*, The Public/Ma Yi; A1: *Letters to Suresh* at Second Stages. Music: Baby Jessica's *Well*, Made Play Walk Up Arts, Music and sound: *EN* with Ren Gyo Soh 2020, Music: Fader Magazines' The Fader Podcast. He won Best Sound Design 2017 at United Solo for *Hide Your Fires* with Ren Gyo Soh. He also did sound for the Emmy award-winning short *Freedom to be: Black Surfers in the Rockaway's*.

EMILY RANKIN (she/her) (Props Designer) is a director, actor, and artist in Albuquerque and Santa Fe. Most recently, she directed and designed the props for *The Night Before Christmas* (Santa Fe Playhouse), an immersive performance with Meow Wolf and, along with Patrick MacDonald, co-directed Santa Fe Playhouse's production of *A Year With Frog and Toad*. During her time spent in Austin, Texas, she directed for various companies, including 7 Towers Theatre, Penfold, Sherrod Curry Productions, Scottish Rite Theatre, Penny Dime Productions, and the Austin Steam Train.

ADI CABRAL (they, them) (Intimacy Director / Dialect Coach) is the Associate Professor of Voice and Movement in the Department of Theatre and Dance at the University of Nevada, Reno, and works professionally as a Dialect Coach, Intimacy Director, and Audiobook Narrator. Adi's professional credits include productions at the Huntington Theatre, the Alliance Theatre, Houston Stages, Utah Shakespeare Festival, the Arvada Center for the Arts and Humanities, the Repertory Theatre of St. Louis, New Repertory Theatre, the Stella Adler Studio of Acting, Mildred's Umbrella Theatre Company, Stage Q, The New Hazlett Theater, The Hangar Theatre Company, Central Square Theatre, Edinburgh Fringe Festival, and Darlinghurst Theatre. Their research and publications focus on training methods for the LGBTQ+ Identified actor and cultural competency in voice and speech training. After twelve years of service, they have been elected to serve as President of the Voice and Speech Trainers Association.

SYDNEY SCHWINDT (she, her) (Fight Director, *Born With Teeth*) is a fight director, actor, and movement educator with 20 years of stage combat experience. She is an Advanced Actor Combatant and Program Developer for the Society of American Fight Directors. She also has certifications with the British Academy of Stage and Screen Combat, Stage Combat Deutschland, and is a member of Independent Drama in the UK. Sydney has taught at the ACT graduate program, Indiana University, Momentum Stage, and more. She is a Resident Artist and engagement team member with the San Francisco Shakespeare Festival. Sydney is on the advisory board for the Same Boat Theatre Collective, an international environmental theatre group. Fight credits include American Conservatory Theatre, San Francisco Shakespeare Festival, Livermore Shakespeare Festival, B Street Theatre, Pocket Opera, Vintage Theatre, and others.

ALLISON GOETZMAN (she, they) (Stage Manager, *Or*) has been stage managing for over 25 years and is thrilled to work her first show with the Santa Fe Playhouse. Favorite past credits include: [Santa Fe] Just Say It Theater's *The Big Heartless*; Adobe Rose Theatre's *The Revolutionists*; [Chicago] Oracle Productions' *The Mother* (Jeff Award-winning); Trap Door Theatre's *La Bête* (Jeff Award-winning), *Les Justes* (on tour in France); Mary Arrchie Theatre Company's *Our Bad Magnet*; [Regional] Eugene O'Neill Theater Center, Berkshire Theatre Festival, and CenterStage. She also just completed her first season at the Santa Fe Opera as Safety Coordinator and is one of three Burning Man Regional Contacts for New Mexico.

HARIRAI KHALSA (she, they) (Stage Manager, *Born With Teeth*) is a writer and theater lover. This is her fourth production with the Santa Fe Playhouse since stage managing *On Clover Road*, *The Baby Monitor*, *The Mountaintop*, and playing one of the ugly stepsisters in *Cinderella* when she was in the third grade. She is delighted to be working alongside such phenomenal artists.

SFP TEAM

Colin Hovde (Executive Director)

Anna M. Hogan (Artistic Director - Production)

Antonio Miniño (Artistic Director - Literary, Casting, Marketing & PR)

David Stallings (Artistic Director - Engagement, Education, Operations)

Zoe Burke (Company & Operations Manager)

Zac Goin (Technical & Facilities Manager)

Cristina Vigil (Patron Services Manager)

Andra Beatty (Development Associate)

Shelly Felt (Bookkeeper)

SFP BOARD OF TRUSTEES

Erin Mozola Bunkley (Chair)

James W. Johnson (Vice-Chair)

Kent Kirkpatrick (Interim Secretary)

Eric Butler (Trustee)

Leslie Cedar (ex officio)

Susan Esco Chandler (Honorary Trustee)

Kristin Goodman (Trustee)

Stuart Handelsman (Trustee)

Colin Hovde (ex officio)

Renee Linson (Trustee)

Tom Morris (Honorary Trustee)

Sage Morris-Greene (Trustee)



CHOCOLATE MAVEN BAKERY & CAFÉ

BRUNCH, LUNCH & DESSERTS

821 W San Mateo Road Santa Fe NM

Order Online • chocolatemaven.com

DONORS (June 2022- February 2024)

Donations to the Santa Fe Playhouse, a 501(c)3 non-profit organization, are fully tax-deductible to the extent allowable by law. We do our very best to keep these records up to date, but for any reason, should you want your gift recognized in another way or if we have misspelled or omitted any names, please let us know, and we will correct this right away.

TORCHBEARERS

Charles Russell Dupwe Jr. Bequest
Robert Jerkins Bequest

SOL \$25,000+

Erin & Thomas Bunkley III
Esther Carp School of Living Fund
Alfred & Susan Escó Chandler
Bruce F. Stuart

FOGATA \$7,500-\$15,000

Brant Baber & Kathy Kalinowski
Eric Butler & Chris Andersen
Stuart Handelsman & Henry Catenacci
Suzanne M. Timble

KIVA \$2,500-\$7,500

Anonymous (3)
Kristen A. Ferraro & Eric Consolazio
Jed & Samantha Futz
Lorraine Haneyko
Ned Harris In loving memory of Elizabeth Harris
Sharon Harrison
Ellen G. & Stephen G Hoffman
Deborah & David Holloway
Colin Hovde
James W. Johnson
Kent Kirkpatrick & Bob Brady
Patrick MacDonald
Julie McCashin & Christopher Amos
Tom Morris & Jeff Pine
John P. Volponi
Bill Westbrook & Dal Norris

LUMINARIA \$1,000-\$2,500

Anonymous (2)
Robert K. Brown & Dennis B. Karbach
Carol Carpenter
Mark A. R. Chalfant & James B. Martin
Merry & Fred Conway
Gay Dillingham
Enterprise Bank & Trust
Mark Kirkpatrick
Grayson & Jennifer Kirtland
David Lamb
Suzanne & Bill Landers
Renee Linson
Angela Kay Martin & Chantel Foretich
Leigh Moila & Charles Dale
David Muck & Cole Martelli
Nan Newton & Dave Grusin
Lucinda & Rigby Owen
Amy Parrish & Jean Philippe Saldana
Deborah Rethemeyer & Patricia Locke
Richard & Pamela Salmon
Peter C. Schanck
Seahollow Family Gift Fund
David Snead & Charles Butler
Larry Tilley
Ted & Christine Williams

FAROLITO \$250-\$1,000

Anonymous (4)
Bob Alexander
Macia Angell
Karen Armitage & John Curl
Patricia Assimakis
David & Margaret Ater
Celia Baldwin & Bruce Catania
Tamara & Joseph Banar
Wayne & Karen Barnes
Thomas & Mary Beckner
Joyce Blalock
Rod Boren Family Fund
Blair Bouchier
Barbara & Don Burnett
John & Dorothy Jean Calzada
Joey & Robin Chavez
Alex Solorzano & Jim Colombo
Pamela Culwell & Chuck Case
Gary Dontzig
Ellen & Bill Dupuy
Lenny Eber & Diane Rubin
David Lamb & Jess Evans
Maggie Fine & Owen Lipstein
Jo Franzen
Joel Gallant
Suzanne & Norman George
Phillip Gesue
Robert A. Goldberg & Doug Dorey
Justin Golding
Bruce Gollub
Becky Gould
Ayden Gramm
Guy & Cathy Gronquist
John & Peggy Hamilton
Priscilla Hensley & David Holthouse
Alan F Hill

Adelma & Thomas Hnasko
Ms. Hollingsworth
David & Kelly Huertas
Robert & Cindy Hughes
Patrick Janssen
Thomas & Carlyn Jervis
Katherine M. Kagel
Shannon Kennedy
Grayson & Jenifer Kirtland
Paul Lindsey & Kathy Alexander
Randal Lee Limbacher & Michael Cain Stewart
Lily Love & Ezra Kortz
Dr. Liz Maines
Gerard J. Martinez y Valencia
Gwynn & Wilson Mason
The McDonald Family Charitable Fund at North
Texas Com Fnd
Christine McHugh
Marilyn J. O'Brien
John L. Olesen
Jay W. Oppenheimer
Patricia Padilla
Michelle Padilla
Nancy & Jim Pierce
Jason Posner
Sabrina Pratt
Palace Prime
Laura Reich & Debbie Zabinski
Elizabeth Rice
Mary & Don Richardson
Don & Sally Romig
Matilda Rubin
Jenna & Wilson Scanlan
Don Shiva & Kevin Waidmann
David Sproat & Sara Breckenridge-Sproat
Sherre Stephens
Andrew Stewart & Anna Hargreaves
Gerald Stiebel & Penelope Hunter-Stiebel
Wendy Tripodi & John Wasnick
Paul & Heather Van Munching
Leslie Weinstein
William White & Anne Coller
Karen Wohlgemuth
Douglas & Morgan Wood
Zeke & Jacoi Woolley
Dean Yannias
Kimberly Zeilik
Joan Zenker
Rosemary Zibart
Kathryn M. Zimmer

CHISPA \$1-\$250

Anonymous (23)
Keith Anderson & Barbara Lensesen
Thomas M. Antonio
Roberta Armstrong & Al Webster
Bill & Susan Barba
Marilyn & Cris Barnes
Gabriel Baron
Marcia R. Barr
Brad Barrios & David Wood
Virginia Barsky
Gayla Bechtol
Patricia D. Beck
Patricia Dawn Beck
John & Barbara Berkenfield
Robert Beseda
Barry Bingham
Eileen K. Blau
Ron & Barbara Bloomberg
Angela Bond and James Markus
Ryla Bouchier
Cathy Brannon
Matt Briggs & Brenda Dingus
Bill Brooks
Barbara Brown
Patricia M. Brown
Richard Byrne
Lee Cabeza de Vaca
Rikki Carroll
Theresa Cashman
Miriam Chapman
Joey & Robin Chavez
Joan and Richard Chodosh
Christopher Foundation for the Arts
April Cleveland
Cynthia Collins
Cynthia Collins
Maryellen Collins
Adela Contreras
Linda Corbet
Judy Costlow
Susan & Chuck Cover
Liz Crain
Holly Haas & Will Demaret
Brownen Denton-Davis
Paula & Neal Devitt
Bob Dijjani Custom Homes Inc
Gale H. Dobyms
Gary Donato
Kathryn Dorko
Deborah Dow
Linda & John Dressman
Dona Durham
Joe & Christine Durlak
Douglas and Marcia Dworkin
Carol H Earp
Robert & Kathleen Eaton
Aaluk Edwardson
Yolanda & Abram Eisenstein
Tina Elmo
Gary & Vanessa Elmore
Suleika Enriquez
John & Mary Jo Esquibel
Haly Etlantus
Mary & Paul Favaro
Pat Feghali
Emma Felt
Lucy Flet
In memory of Kirt Fiegel
Richard & Lisa Gray Fisher
Vincent & Elizabeth Faust
Portia Franklin
Nile Frederickson
Michael D. Freed
Daniel & Susan Friedman
Seth Mark Friedman
Dave & Gail Funk
Forrest Fyre
Nancy & Haines Gaffner
Dana Gallagher
Joel Gallant & Joel Meneses
Randall Galloway
Dorothy & George Gamble
George & Dee Gamble
Alma Garcia
Lee Garcia
Lucia Garcia
Robert Garcia
Norman & Suzanne George
Lina & Timothy Germann
Char Cook & Howard Gershon
Paul Gibson & Roxanne Barber
Walt Gilmore
Kara Gmitter & Ian Tregillis
Kristin & Eli Goodman
Lynn Goodwin
Claudia & Mickey Gordon
Jennifer Graves
Jason Grinage
John Gustafson
Mitchell Gustin
The Hancock
Debra Hartsell & Michael James
Patricia C. Hastings and Coletta Reid
In honor of Charles Hill, a theater lover.
Robert Himmerich y Valencia &
Eva Valencia de Himmerich
Carol Hodge
Kathleen Holming
W. Houston & Kimberly Dougharty
Sue & Sandy Hovde
Karen Howell
Linda & Shawna Howley
Dr. Jo Hudson
Robert & Cindy Hughes
Steve & Margie Hughes
Jobie Irvine
Juliet & Kevin Jacobs
Brenda Jerome
Betsy Jones
Julie A. Jones
Jordan, CPA
Marty Kainec and Lester Perling
Alan Kapulski
Sandra Kemp
Ellen Kemper & Ken Hughes
Linda Kenney
Bo Keppel
Echota Killnight
Tegan Kline
Michele Knudson
Dan Koffman
Ruth & Paul Kovnat
Carol Lachman
Craig Lamb
Marcia & Timothy Lenihan
Maurice A. & Virginia Lee Lierz
Doug Ligare
Richard London
JoAnn Lucas
Marty Madden
Whitney Carroll Malone
Summer and Gregg Manoff
Dorothy Marchand

Antoinette Martinez
Ann L. Mauzy
Frank McKown
Marsha & Jim Meehan
Jonah Scott Mendelssohn
William Michener
Paul Douglas Michnewicz
Montana Miller
Judith Moir
Mary Jo Morgan
Marilyn Morgan
David & Donna Morrell
Sage-Morris-Greene
Gay Nathan
Christophe Neander
Terri Nicholetti
Adriana Nodal-Tarafa
Jane C Oakes
Mariah Olesen
Kathy Oxborrow
Paul Pascarella
Eric Passmore
Selena & Robert Paulsen
John Pena
Amanda Pierce
Rebecca Porras & Robert Pederson
Janey Potts
Richard & Rosa Pretto
Ann L. Price
Susan & Bill Primm
Dori & Tom Ramsay
Bernard Ewell & Sali Randel
Ami & Ted Razatos
Will Reichard-Flynn
Felicia Rocca
Izra J Rosario
Gregory Ross
Kristin Carlsen Rowley
Ariana Roybal
Daniel Rubin
John Salinas
Gail P. Samota
Paula Scarpellino
Ken and Rebecca Shaffer
Joan & Laurence Schandler
Holly Scheib & Paul Wisneskey
Terri Scullin
Julie Shapiro
Catherine Sheppard & Jerry Cooke
David Shiang
Sharon Smith
Suzanne Somers & Rick Jaramillo
Mary Sorvig
Richard Stangarone
Walter A. Stark Jr.
Aaron Stevens
Robert M. Strumor
Charles & Jan Swaney
Darla Swanson
Babak Tafti
Cyndy Tanner
Trish Tanner
Margarita & Spence Terrell
Douglas & Catherine Thayer
John Thilsted & Donna Kusewitt
Sarah Olmsted Thomas
Jazmine Torres
Blas Uberuaga
Marie Valdez
Lisa Van De Graaff & Blas Uberuaga
Lloyd Van Horn
Leslie Veditz
Molly Wagoner
Gordon Walker
Julie and Paul Watler
Wayne & Sandy Ware
Al Webster & Roberta Armstrong
Gwendolyn Wells
Joan H & Truel West
Geoffrey & Jacqueline West
Mark Westburg
Robert Whalen
Laurie Wilder
Brenda J. Wolfer
B Douglas Wood
David G. Wood
Roger Yoerges
Ellen Zieselman
Patricia & Nolan Zisman
Todd Zonderman & Henrietta Lidchi

IN-KIND SUPPORT

(Guest Artist Housing)
Erin & Thomas Bunkley III
Alfred & Susan Escó Chandler
Stuart Handelsman & Henry Catenacci

CORPORATE SPONSORS & FOUNDATION SUPPORT

Actors' Equity Foundation Inc., City of Santa Fe Dept. of Arts and Culture, Goldberg Family Foundation, Hestia Fund of Santa Fe, Hinkle Shanor LLP, Hoffman-Bravy Charitable Foundation, Millstein Advisors, LLC, Netflix, Network for Good, New Mexico Arts, The Rikoon Group, Santa Fe Community Foundation, The Shubert Foundation, Dwight Stuart Youth Fund, Stuart Martin Dudley & Webb, PC, The Ward Law Firm, Esther & Morton Wohlgenuth Foundation.





EXPLORE & ADORE
CREATIVE AGENCY



Commercial Production - Digital Marketing - Content Creation



Tristin Rogers
Chef of the Year 2020
New Mexico
Restaurant
Association
NMRA



Nat.Alex@ExploreAndAdoreAgency.com

Tri-M illennial
usic
akers

PRESENTS

A Little Night Music

MUSIC AND LYRICS
BY STEPHEN SONDHEIM

At the New Mexico Actor's Lab Theater

Performances run March 7th – 23rd 2024:

Evenings at 7:00pm

March 7-9, 14-16, and 21-22,

Matinees at 2:00pm

March 10, 17,
and Saturday the 23.

For more information
and tickets visit
www.trimsantafe.org



PROUD TO SUPPORT
SANTA FE PLAYHOUSE'S
2023 SEASON



THE FINEST IN MODERN FRENCH CUISINE SINCE 1995

315 OLD SANTA FE TRAIL,
SANTA FE, NM, 87501
PHONE: (505) 986-9190
315SANTAFE.COM



PROUD TO FEED THE

Artistic Spirit



Albertsons Market and Market Street know the art of creating fun and entertainment. That's why we not only support local arts and cultural events, but also go the extra mile for our guests who enjoy them. Whatever your needs for fun and enjoyment, we are here to help you get it done.

FLEXPASS AND SAVE!

8 TICKETS FOR THE PRICE OF 7

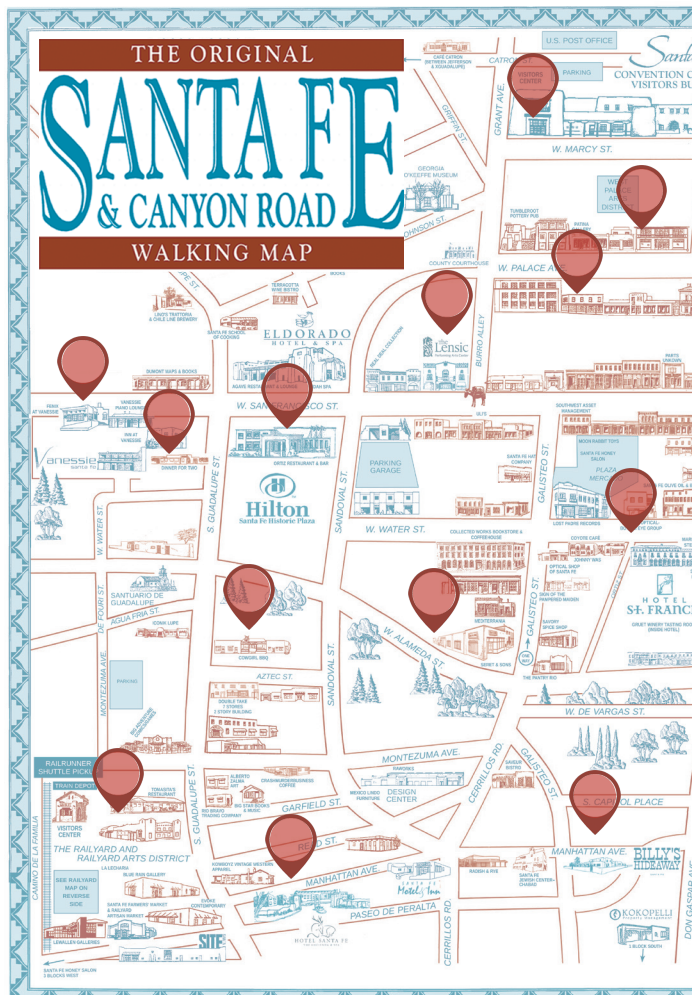
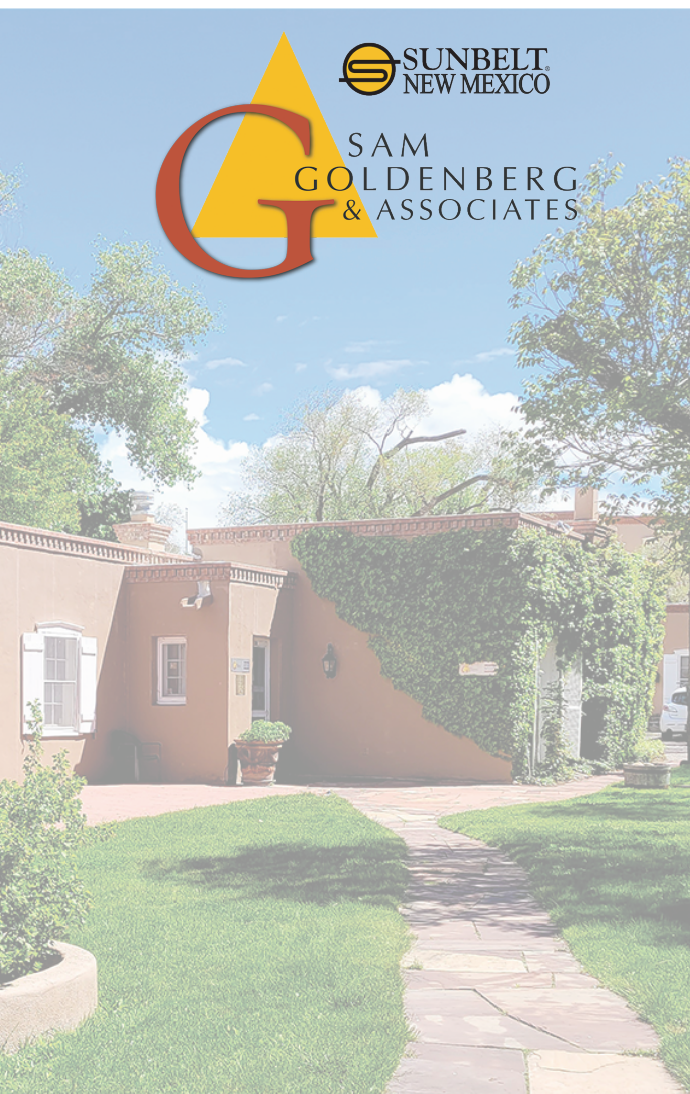
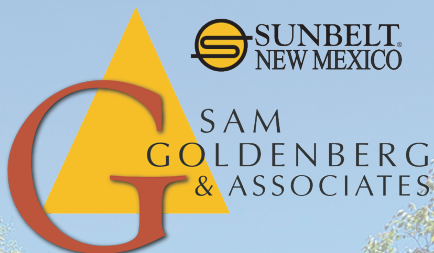
SFP's FlexPass subscriptions let you decide where you want to sit and when you want to come while paying one price to get eight tickets that can be used on all productions of the 2024 Season.

TO LEARN MORE VISIT

santafeplayhouse.org/2024-subscriptions/

Let Santa Fe's Award-Winning Team Build Value for your Business

Contact us for a complimentary meeting



LewAllenGalleries
1813 Paseo de Peralta, Santa Fe, NM 87508-3650

Georgia O'Keeffe Museum
217 Johnson St.
505.946.1000
okeeffemuseum.org

OCULUS
BY WINN-DIXIE GROUP

Collected Works Books, Art & Coffeehouse
• BOOKS
• NEWSPAPERS
• COFFEE
• TEA
• POSTERS
• MERCH
• RESTAURANT
300 S. DARTMOUTH ST.
505.946.4224
CWBKSTORE.COM

Buy a Business, Sell A Business
Our Only Business

SamGoldenberg.com
info@samgoldenberg.com
505-820-0163

Let Us Put Your Business
on the Map

SantaFeWalkingMap.com
info@santafewalkingmap.com
505-820-1011

PALACE PRIME

A SANTA FE TRADITION REBORN

PRIME STEAKS
SEASONAL SEAFOOD
HANDMADE PASTA
CRAFT COCKTAILS
& PREMIUM WINES



Wednesday, Thursday, Sunday
Kitchen: 5-10pm, Bar 5-11pm

Friday + Saturday
Kitchen: 5-10:30pm, Bar 5-11:30pm

Happy Hour 5pm-6:30pm Daily

PP

142 West Palace Ave,
Santa Fe, NM
505-919-9935
palaceprimesf.com



*The stage! The actors!
The playwrights!
We salute them all ...
thank you for bringing
live theater to Santa Fe.*

Your weekly guide to everything you need to know about art, entertainment, literature, and culture in Santa Fe and beyond. Find it at newsstands, in the Friday edition of *The New Mexican*, and online at pasatiempomagazine.com.

Pasatiempo

SANTA FE + NEW MEXICAN

THE
SANTA FE
OPERA



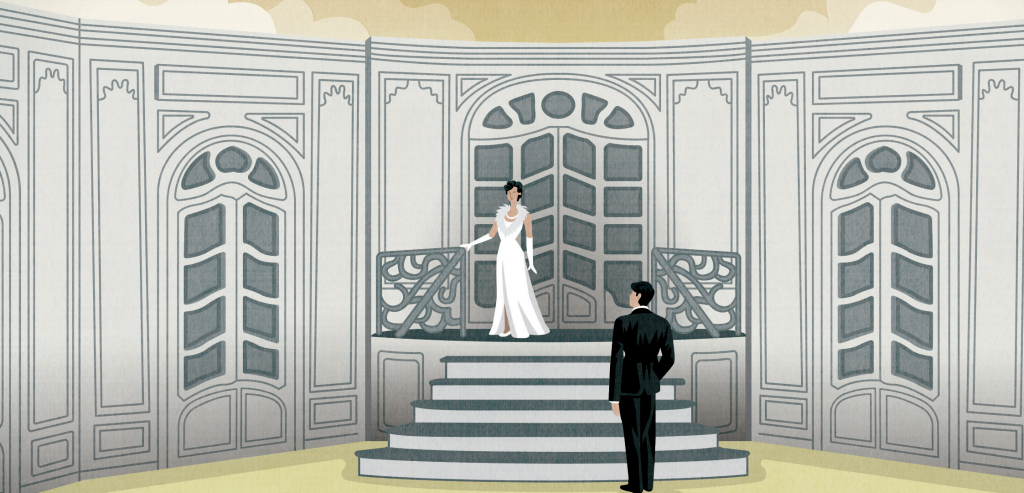
La Traviata

Giuseppe Verdi

June 28

July 3, 6, 12, 19

August 1, 5, 10, 17, 20, 24



20
24
JUN 28 – AUG 24

LA TRAVIATA

Verdi

DON GIOVANNI

Mozart

WORLD PREMIERE

THE RIGHTEOUS

Spears/Smith

DER
ROSENKAVALIER

Strauss

THE ELIXIR
OF LOVE

Donizetti

#OpenAirOpera



Explore
the Season

For tickets and more
information visit
santafeopera.org or
call 505-986-5900

La Traviata Illustration
by Benedetto Cristofani